



118 Mahana Lane Te Awamutu NZ

3  1  2 

What a find, this beautifully presented three double bedroom home with open plan living, dining and kitchen area flows to a quiet outdoor deck area and spa pool overlooking farmland.

This home is packed with features including a brand-new oven and dishwasher installed in a modern kitchen, new LED downlights throughout and pre-wired for TV, including outside for when you're relaxing in the spa.

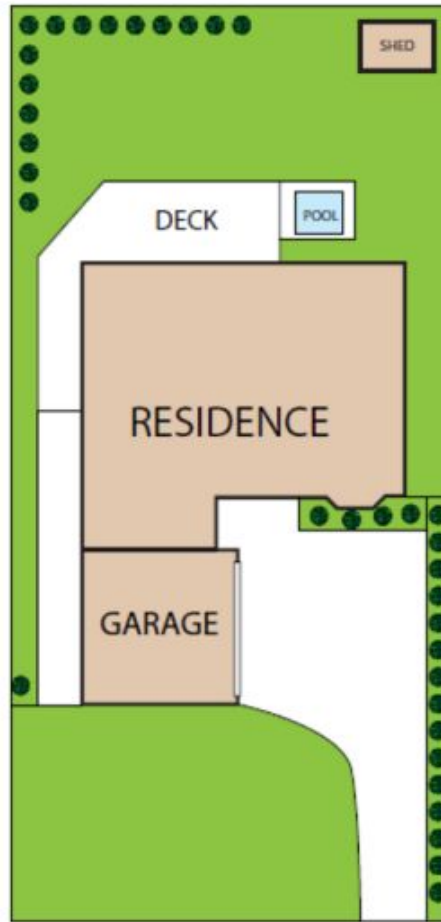
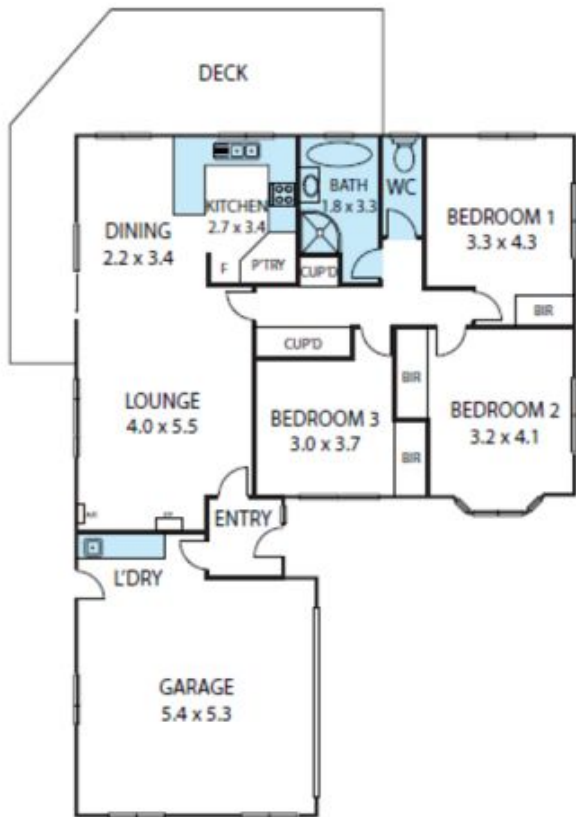
The home is well insulated and you're kept warm and toasty with a choice of either heat pump or electronic gas fire and a heat transfer system distributes the warmth evenly throughout the rest of the home.

A double garage with internal access also contains the laundry and the well fenced property will appeal to those who are looking for space for kids and pets to roam about

Type : House
Land Size : 648 sqm
View : <https://dev.stonerealestate.co.nz/sale/nz/-/te-awamutu/residential/house/8199700>

[For full version visit the website](https://dev.stonerealestate.co.nz)

<https://dev.stonerealestate.co.nz>



118 Mahana Lane, Te Awamutu 3800

TOTAL APPROX. FLOOR AREA 128 SQ.M

While every attempt has been made to ensure the accuracy of the floor plan contained here, measurements of doors, windows, rooms and any other items are approximate and no responsibility is taken for any error, omission, or misstatement. This plan is for illustrative purposes only and should be used as such by any prospective purchaser.