



61 Mountain View Drive Te Awamutu NZ

3  1  2 

This delightful character bungalow is full of warmth and charm, perfectly positioned in a sought-after location ideal for families. Set on a generous 984m² well-fenced section, there's plenty of room for children to play and explore safely.

Inside, you'll find three generous bedrooms and a well-appointed tiled bathroom, offering comfortable and functional living. The modern kitchen comes complete with a pantry, making everyday cooking and entertaining a breeze.

Stay cosy through the colder months with both a heat transfer system and a woodburner - perfect for curling up by the fire on winter evenings. Additional features include a

Type : House
Land Size : 984 sqm
View : <https://dev.stonerealestate.co.nz/sale/nz/-/te-awamutu/residential/house/8347450>



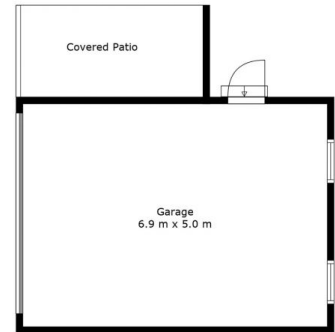
Braden Chick
07 871 5044

[For full version visit the website](https://dev.stonerealestate.co.nz)

<https://dev.stonerealestate.co.nz>

61 Mountain View Drive

Total Floor Area: 113sq.m APPROX.

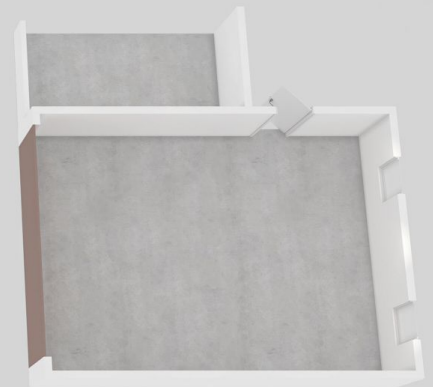


*in*House

This floor plan has been created by inHouse and are intended solely for marketing purposes. The plans are not scale drawings, however, we've made every effort to ensure the accuracy of the information, but we cannot be held liable for any potential inaccuracies. We kindly request that you refrain from reproducing or distributing the floor plans without obtaining consent from inHouse.

61 Mountain View Drive

Total Floor Area: 113sq.m APPROX.



*in*House

This floor plan has been created by inHouse and are intended solely for marketing purposes. The plans are not scale drawings, however, we've made every effort to ensure the accuracy of the information, but we cannot be held liable for any potential inaccuracies. We kindly request that you refrain from reproducing or distributing the floor plans without obtaining consent from inHouse.