



337 Sinclair Terrace Te Awamutu NZ

3  1  2 

Tucked away at the end of the road and surrounded by established trees, this inviting three bedroom home offers the perfect balance of privacy and convenience.

Step inside to discover open plan living, dining, and kitchen areas designed for easy everyday living and entertaining. The layout is practical, light-filled, and ready for you to make your own.

With one well-appointed bathroom and a comfortable floor plan, this home is an excellent option for first-home buyers or those seeking a solid investment.

The grounds are extremely low maintenance currently, but there's plenty of scope for landscaping, veggie gardens or

Type : House
Land Size : 932 sqm
View : <https://dev.stonerealestate.co.nz/sale/nz/-/te-awamutu/residential/house/8475714>



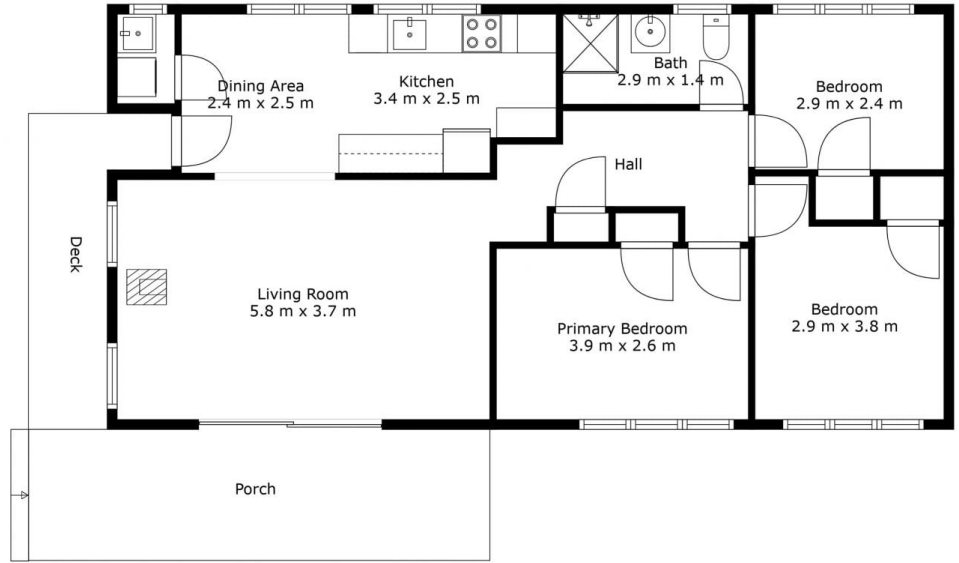
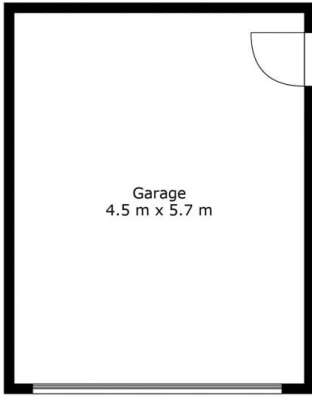
Braden Chick
07 871 5044

[For full version visit the website](https://dev.stonerealestate.co.nz)

<https://dev.stonerealestate.co.nz>

337 Sinclair Terrace

Total Floor Area: 91 sq.m APPROX.



*in*House

This floor plan has been created by inHouse and are intended solely for marketing purposes. The plans are not scale drawings, however, we've made every effort to ensure the accuracy of the information, but we cannot be held liable for any potential inaccuracies. We kindly request that you refrain from reproducing or distributing the floor plans without obtaining consent from inHouse.

337 Sinclair Terrace

Total Floor Area: 91 sq.m APPROX.



*in*House

This floor plan has been created by inHouse and are intended solely for marketing purposes. The plans are not scale drawings, however, we've made every effort to ensure the accuracy of the information, but we cannot be held liable for any potential inaccuracies. We kindly request that you refrain from reproducing or distributing the floor plans without obtaining consent from inHouse.