



48 Whitaker Street Kihikihi NZ

3  2  2 

Positioned directly across the road from Kihikihi Primary School, this modern home is the perfect choice for families. Built in 2020, it offers three bedrooms and two bathrooms, with an inviting open-plan kitchen and dining area that is light-filled and welcoming.

Set at the end of a cul-de-sac, the property enjoys a great setting with a mini playground right outside the door - ideal for the kids. The Kihikihi Domain and local amenities are all within walking distance, adding to the everyday convenience.

Less than 10 minutes to Te Awamutu, and with Hamilton (approx. 35 minutes), Cambridge, and Otorohanga (approx. 25 minutes) easily accessible, this home is well positioned

Type : House
Land Size : 674 sqm
View : <https://dev.stonerealestate.co.nz/sale/nz/-/ki-hikihi/residential/house/8480626>



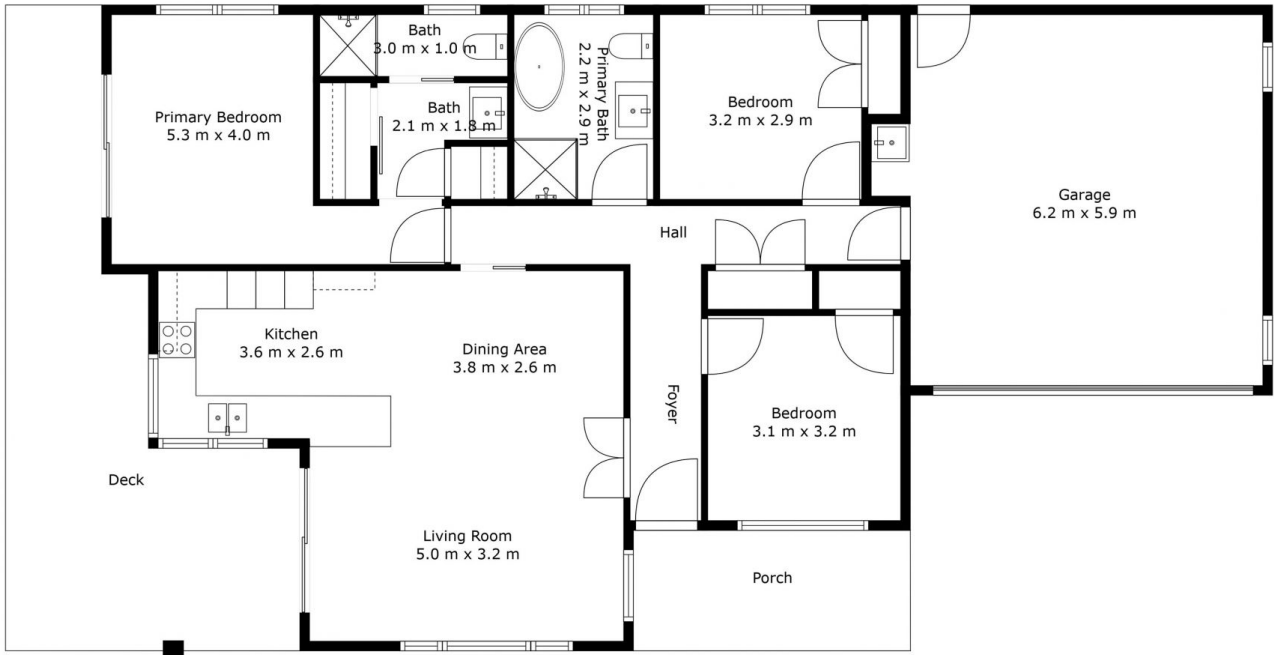
Braden Chick
07 871 5044

[For full version visit the website](https://dev.stonerealestate.co.nz)

<https://dev.stonerealestate.co.nz>

48 Whitaker Street

Total Floor Area: 147 sq.m APPROX.



*in*House

This floor plan has been created by inHouse and are intended solely for marketing purposes. The plans are not scale drawings, however, we've made every effort to ensure the accuracy of the information, but we cannot be held liable for any potential inaccuracies. We kindly request that you refrain from reproducing or distributing the floor plans without obtaining consent from inHouse.

48 Whitaker Street

Total Floor Area: 147 sq.m APPROX.



*in*House

This floor plan has been created by inHouse and are intended solely for marketing purposes. The plans are not scale drawings, however, we've made every effort to ensure the accuracy of the information, but we cannot be held liable for any potential inaccuracies. We kindly request that you refrain from reproducing or distributing the floor plans without obtaining consent from inHouse.