



622 Kihikihi Road Te Awamutu NZ

3 1 1

Coming to the market for the first time in over 20 years, this much-loved 1960's family home offers a wonderful opportunity to secure a spacious and solid property with plenty of potential.

Set over two levels and offering a generous floor plan, the home provides flexibility and space for the whole family. On the lower level, you'll find a single internal access garage and a large rumpus room, ideal as a second living space, playroom, or even a home office - there's room for everyone to spread out and enjoy.

Upstairs, the home features three generous bedrooms, a family bathroom with separate toilet, and light-filled living areas that capture the home's elevated position. Many of

Type : House
Land Size : 744 sqm
View : <https://dev.stonerealestate.co.nz/sale/nz/-te-awamutu/residential/house/8531995>



Braden Chick
07 871 5044



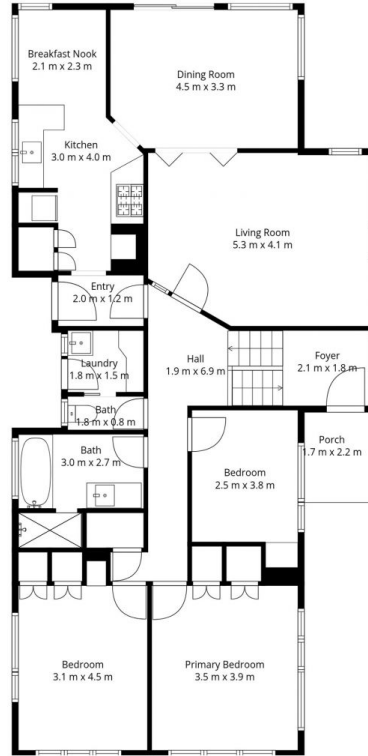
Samantha Clarke
07 871 5044

[For full version visit the website](https://dev.stonerealestate.co.nz)

<https://dev.stonerealestate.co.nz>

622 Kihikihi Rd

Total Floor Area: 200m² APPROX.

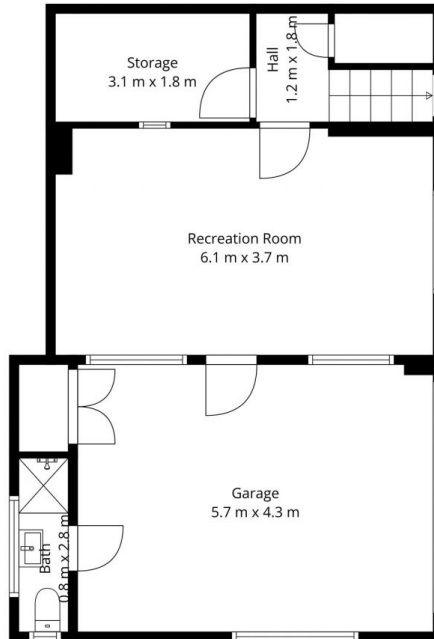


This floor plan has been is intended solely for marketing purposes. The plans are not scale drawings, however, we've made every effort to ensure the accuracy of the information, but we cannot be held liable for any potential inaccuracies. We kindly request that you refrain from reproducing or distributing the floor plans without obtaining consent.

*in*House

622 Kihikihi Rd

Total Floor Area: 200m² APPROX.



This floor plan has been is intended solely for marketing purposes. The plans are not scale drawings, however, we've made every effort to ensure the accuracy of the information, but we cannot be held liable for any potential inaccuracies. We kindly request that you refrain from reproducing or distributing the floor plans without obtaining consent.

*in*House