






2 Moule Street Kihikihi NZ

3  2  2 

Welcome to this modern brick home, perfectly positioned on an elevated 1335m² (approx.) section in Kihikihi. Built in 2021, this property offers the best of modern living, space, style, and practicality.

Set on a generous, elevated section, there's plenty of room to enjoy the outdoors while appreciating the sense of space and outlook. Uninterrupted views of Mt Maungatautari, a securely fenced section, established trees and gardens, and a fantastic BBQ area create an ultra-private oasis, the ideal setting for entertaining or simply unwinding in peace this summer.

Step inside and you're greeted by an airy, bright, and welcoming open-plan living, dining, and kitchen area,

[For full version visit the website](https://dev.stonerealestate.co.nz)

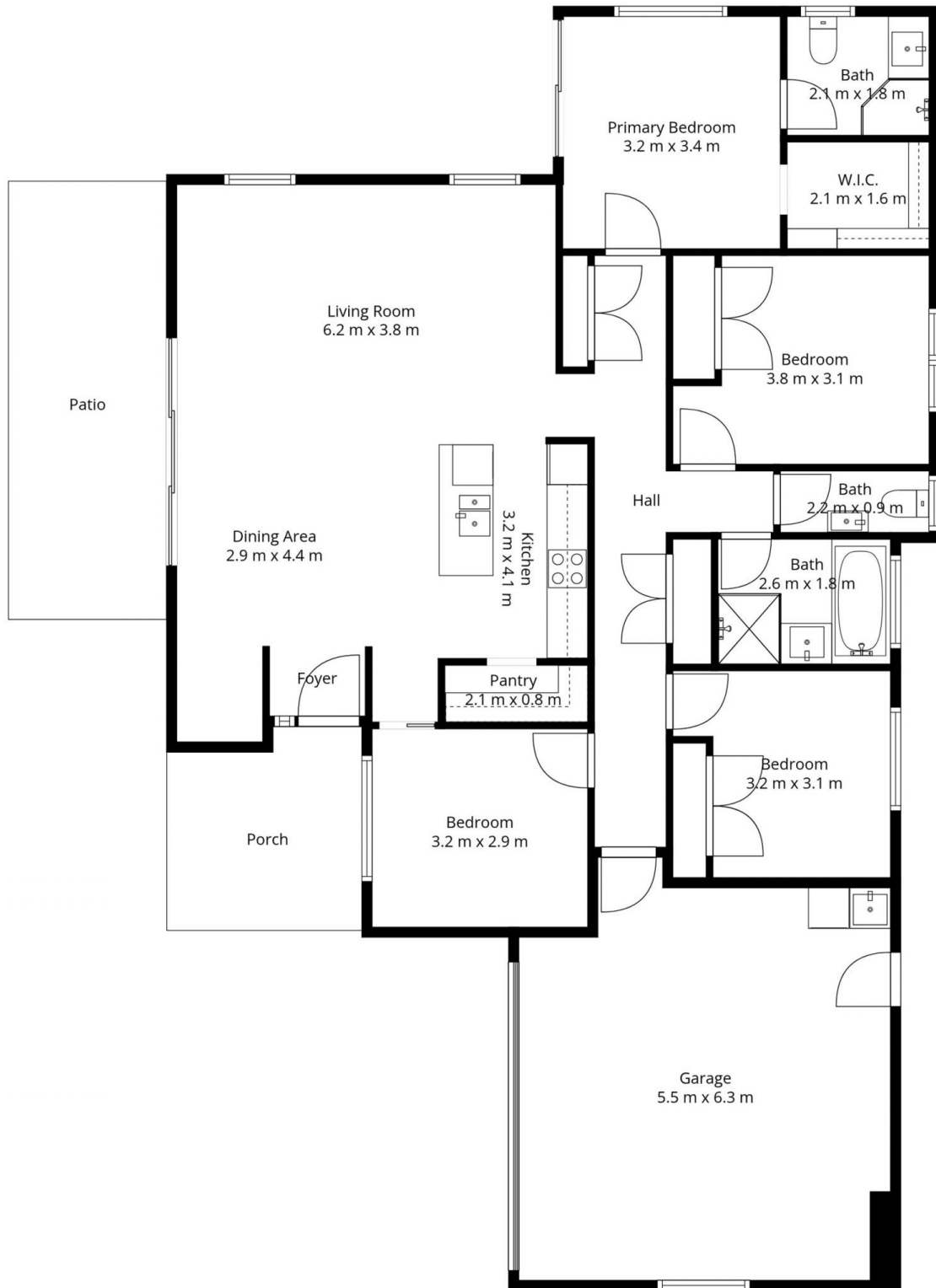
Type : House
Land Size : 1335 sqm
View : <https://dev.stonerealestate.co.nz/sale/nz/-/ki-hikihi/residential/house/8540148>



Braden Chick
07 871 5044

2 Moule Street

Total Floor Area: 181 sq.m APPROX.



*in*House

This floor plan has been created by inHouse and are intended solely for marketing purposes, the floor areas mentioned also encompass the garage areas unless explicitly stated otherwise. The plans are not scale drawings, however, we've made every effort to ensure the accuracy of the information, but we cannot be held liable for any potential inaccuracies. We kindly request that you refrain from reproducing or distributing the floor plans without obtaining consent from inHouse.

2 Moule Street

Total Floor Area: 181 sq.m APPROX.



*in*House

This floor plan has been created by inHouse and are intended solely for marketing purposes, the floor areas mentioned also encompass the garage areas unless explicitly stated otherwise. The plans are not scale drawings, however, we've made every effort to ensure the accuracy of the information, but we cannot be held liable for any potential inaccuracies. We kindly request that you refrain from reproducing or distributing the floor plans without obtaining consent from inHouse.