



### 28 Cucksey Crescent Te Awamutu NZ

3  1  2 

Set on a 655m<sup>2</sup> (approx.) section in a peaceful cul-de-sac, this property offers a fantastic opportunity to secure a solid home in a convenient Te Awamutu location.

Featuring three double bedrooms, one family bathroom, and a detached double garage, this home delivers comfort and practicality for a range of buyers - whether you're stepping onto the property ladder or expanding your investment portfolio.

The layout is functional and family-friendly, with good indoor flow and plenty of scope to add value over time. The woodfire and heat pump will keep you comfortable year round.

**Type** : House  
**Land Size** : 655 sqm  
**View** : <https://dev.stonerealestate.co.nz/sale/nz/-/te-awamutu/residential/house/8556252>



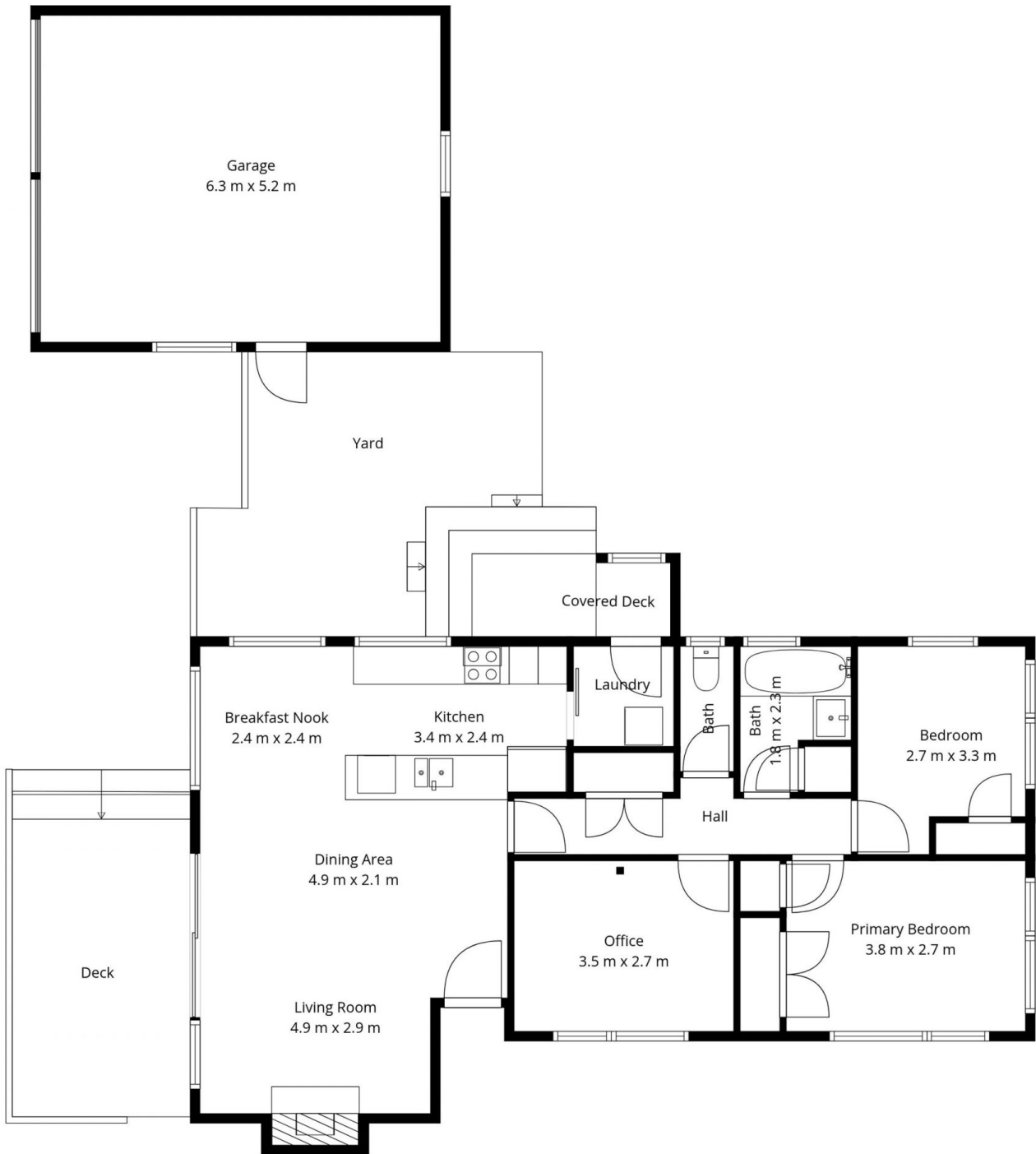
**Braden Chick**  
07 871 5044

[For full version visit the website](https://dev.stonerealestate.co.nz)

<https://dev.stonerealestate.co.nz>

# 28 Cucksey Crescent

Total Floor Area: 90 sq.m APPROX.



*in*House

This floor plan has been created by inHouse and are intended solely for marketing purposes, the floor areas mentioned also encompass the garage areas unless explicitly stated otherwise. The plans are not scale drawings, however, we've made every effort to ensure the accuracy of the information, but we cannot be held liable for any potential inaccuracies. We kindly request that you refrain from reproducing or distributing the floor plans without obtaining consent from inHouse.

# 28 Cucksey Crescent

Total Floor Area: 90 sq.m APPROX.



*in*House

This floor plan has been created by inHouse and are intended solely for marketing purposes, the floor areas mentioned also encompass the garage areas unless explicitly stated otherwise. The plans are not scale drawings, however, we've made every effort to ensure the accuracy of the information, but we cannot be held liable for any potential inaccuracies. We kindly request that you refrain from reproducing or distributing the floor plans without obtaining consent from inHouse.