



24B Sheehan Street Kihikihi NZ

3 1 1

Don't miss your opportunity to secure this newly refurbished home in the heart of Kihikihi, where the hard work has already been done and the finishing touches are up to you to choose.

Freshly repainted inside and out, with a brand new roof, updated wiring, and new insulation, this relocated home feels light, inviting, and ready to enjoy from day one. It's the perfect blend of peace of mind and potential. Move straight in while still having the freedom to personalise and make it your own.

There's plenty of scope to design the garden of your dreams on the 406m² (approx.) section. Whether you're imagining landscaped outdoor living, space for kids or pets,

Type : House
Land Size : 406 sqm
View : <https://dev.stonerealestate.co.nz/sale/nz/-/ki-hikihi/residential/house/8600156>



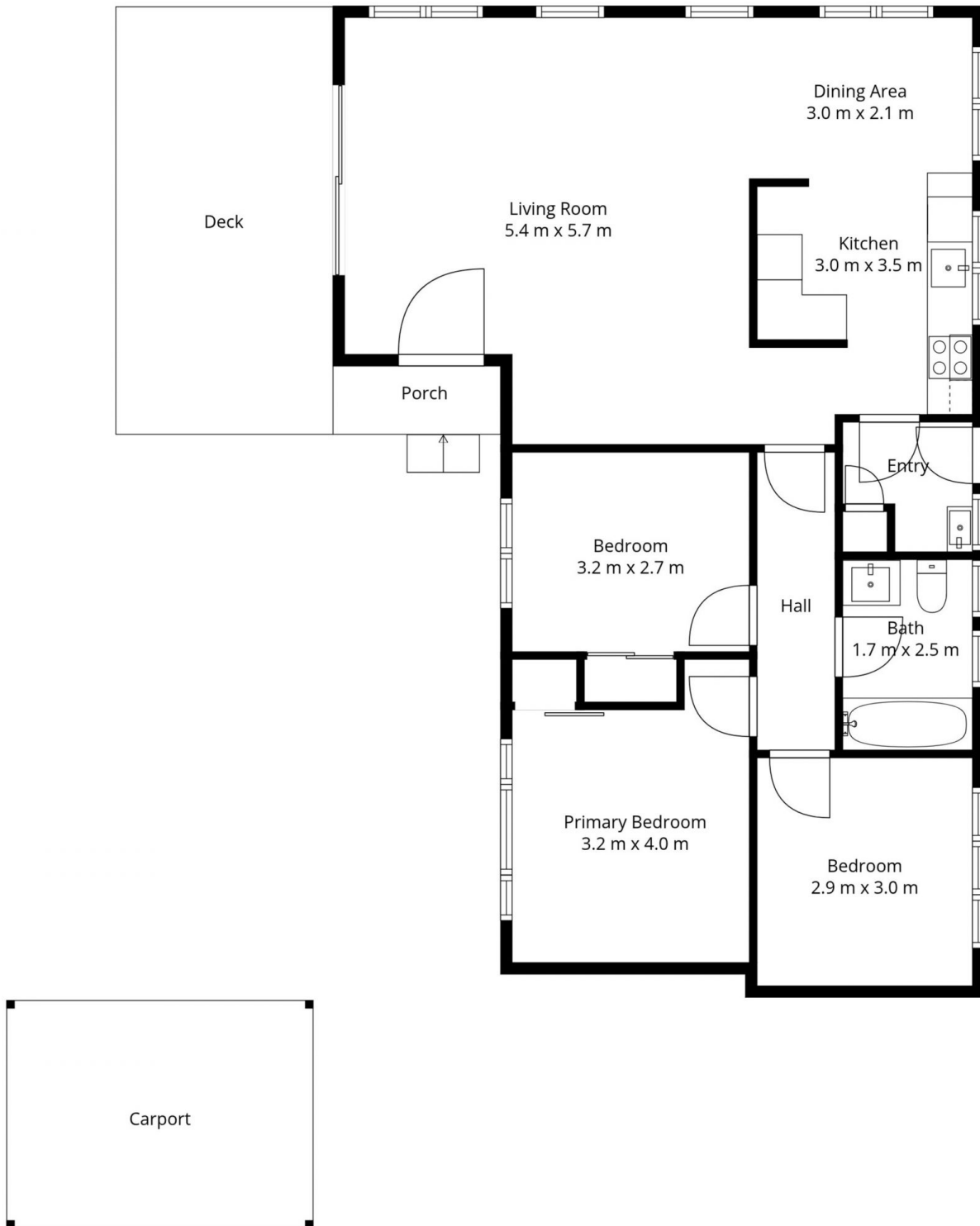
Braden Chick
07 871 5044

[For full version visit the website](https://dev.stonerealestate.co.nz)

<https://dev.stonerealestate.co.nz>

24b Sheehan Street

Total Floor Area: 88 sq.m APPROX.



*in*House

This floor plan has been created by inHouse and are intended solely for marketing purposes, the floor areas mentioned also encompass the garage areas unless explicitly stated otherwise. The plans are not scale drawings, however, we've made every effort to ensure the accuracy of the information, but we cannot be held liable for any potential inaccuracies. We kindly request that you refrain from reproducing or distributing the floor plans without obtaining consent from inHouse.

24B Sheehan Street

Total Floor Area: 88 sq.m APPROX.



*in*House

This floor plan has been created by inHouse and are intended solely for marketing purposes, the floor areas mentioned also encompass the garage areas unless explicitly stated otherwise. The plans are not scale drawings, however, we've made every effort to ensure the accuracy of the information, but we cannot be held liable for any potential inaccuracies. We kindly request that you refrain from reproducing or distributing the floor plans without obtaining consent from inHouse.