



### 43B Whitaker Street Kihikihi NZ

2  1  1 

Set in a well connected Kihikihi location, this neatly presented two bedroom unit delivers an easy care lifestyle without compromise. Practical in design and comfortable in feel, it's an ideal choice for those wanting a home that's simple to maintain and easy to enjoy.

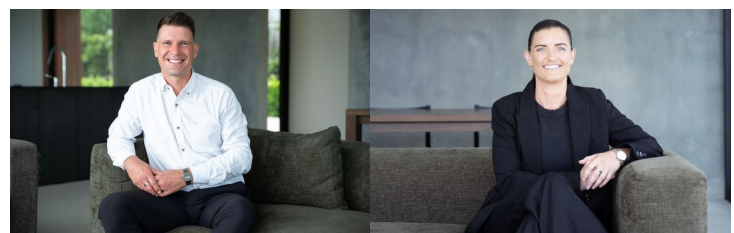
Everyday convenience is right at your doorstep, with Kihikihi Domain and Primary School just a short stroll away. Te Awamutu is under 10 minutes by car, offering a full range of shopping, services, and dining options, while Cambridge and Otorohanga are both approximately 20 minutes away. Hamilton is also within easy reach at around 35 minutes, making commuting a breeze.

Whether you're entering the market, downsizing into

[For full version visit the website](https://dev.stonerealestate.co.nz)

**Type** : Unit

**View** : <https://dev.stonerealestate.co.nz/sale/nz/-/kihikihi/residential/unit/8618726>



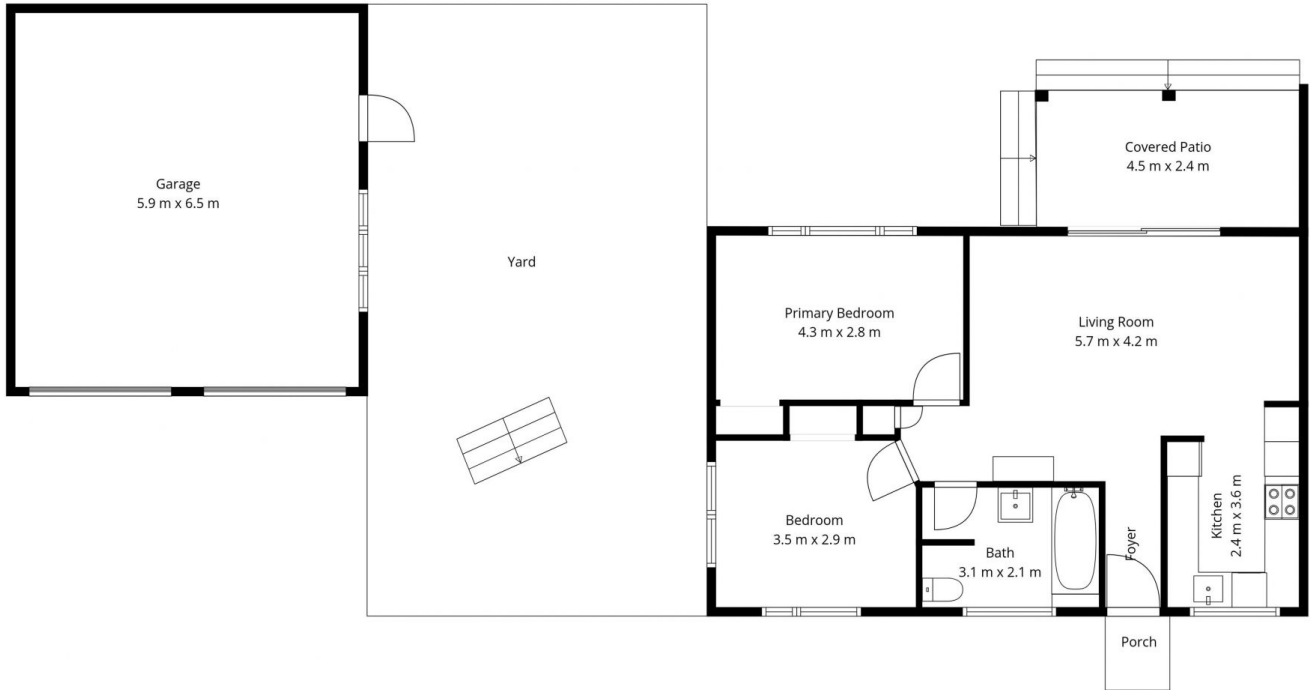
**Braden Chick**  
07 871 5044

**Samantha Clarke**  
07 871 5044

<https://dev.stonerealestate.co.nz>

# 43b Whitaker Street

Total Floor Area: 80 sq.m APPROX.



*in*House

This floor plan has been created by inHouse and are intended solely for marketing purposes. The plans are not scale drawings, however, we've made every effort to ensure the accuracy of the information, but we cannot be held liable for any potential inaccuracies. We kindly request that you refrain from reproducing or distributing the floor plans without obtaining consent from inHouse.

# 43b Whitaker Street

Total Floor Area: 80 sq.m APPROX.



*in*House

This floor plan has been created by inHouse and are intended solely for marketing purposes. The plans are not scale drawings, however, we've made every effort to ensure the accuracy of the information, but we cannot be held liable for any potential inaccuracies. We kindly request that you refrain from reproducing or distributing the floor plans without obtaining consent from inHouse.