



1/157 Mahana Lane Te Awamutu NZ

2 1 1

Enjoy elevated views from this solid two bedroom brick unit, designed for low-maintenance living with aluminium joinery throughout. The home features a well-laid-out open plan dining and lounge area, complemented by a separate kitchen for added functionality.

Step outside to a private patio area - perfect for relaxing or entertaining. The property includes a single detached carport with an attached storage room, offering practical space for tools or hobbies.

Inside, you'll find a separate toilet, dedicated laundry, and the added reassurance of Healthy Homes compliance.

Whether you're downsizing, investing, or stepping onto the

[For full version visit the website](https://dev.stonerealestate.co.nz/sale/nz/-/te-awamutu/residential/unit/8648424)

Type : Unit
Price : \$465,000
View : <https://dev.stonerealestate.co.nz/sale/nz/-/te-awamutu/residential/unit/8648424>



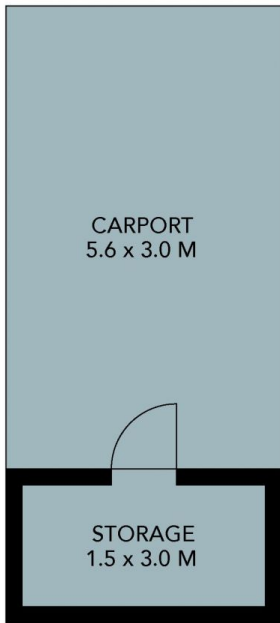
Fiona Collins
07 871 5044

Ian Jones
07 871 5044

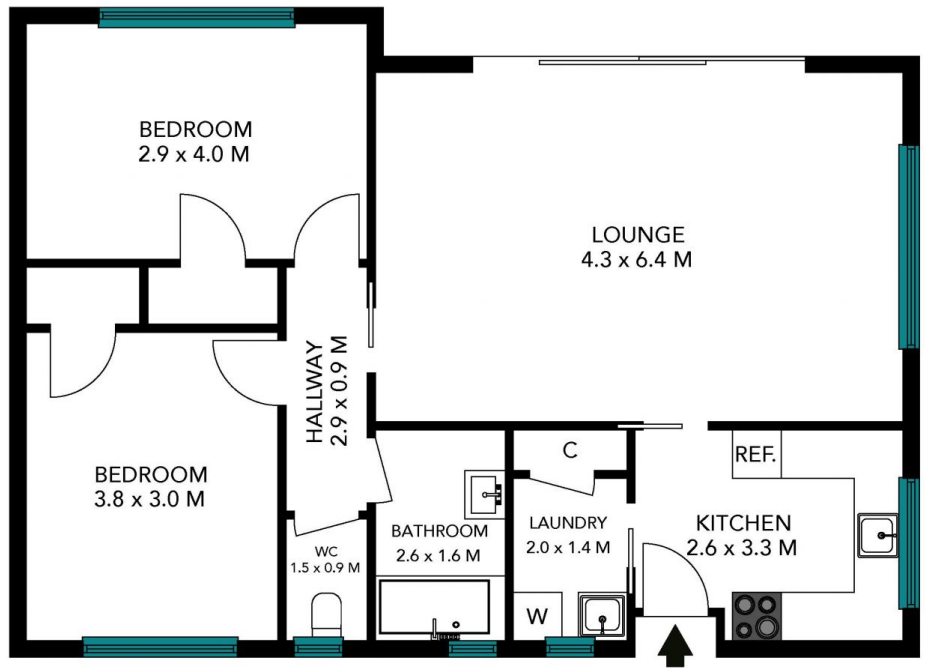
<https://dev.stonerealestate.co.nz>

1/157 Mahana Lane
Te Awamutu

STONE



(NOT IN POSITION)



The floor plan is not to scale; measurements are indicative and in metres. Exterior elements are not in position. Plans should not be relied on. Interested parties should make and rely on their own enquiries. All other information provided has been collected from reliable sources but cannot be guaranteed for accuracy.

1/157 Mahana Lane
Te Awamutu

STONE



The floor plan is not to scale; measurements are indicative and in metres. All features included in this 3D plan are for inspiration purposes only. This is not an exact replica of the property or the position of exterior elements. Plans should not be relied on. Interested parties should make and rely on their own enquiries.