



800 Pakura Street Te Awamutu NZ

3 1 2

Modern comfort meets timeless character in this beautifully maintained 1960's home, where charm and contemporary living come together effortlessly. Set across two levels and lovingly cared for, this property offers a warm and inviting atmosphere from the moment you arrive.

Positioned to capture lovely elevated views across Te Awamutu, the upper level is the heart of the home, featuring a light-filled open plan kitchen, dining, and living area, perfect for everyday living and easy entertaining. Throughout these spaces, modern UPVC joinery enhances insulation and comfort, while an HRV system ensures a fresh, healthy indoor environment year-round. Underfoot, stunning native Rimu flooring adds warmth and character, beautifully complementing the home's timeless appeal.

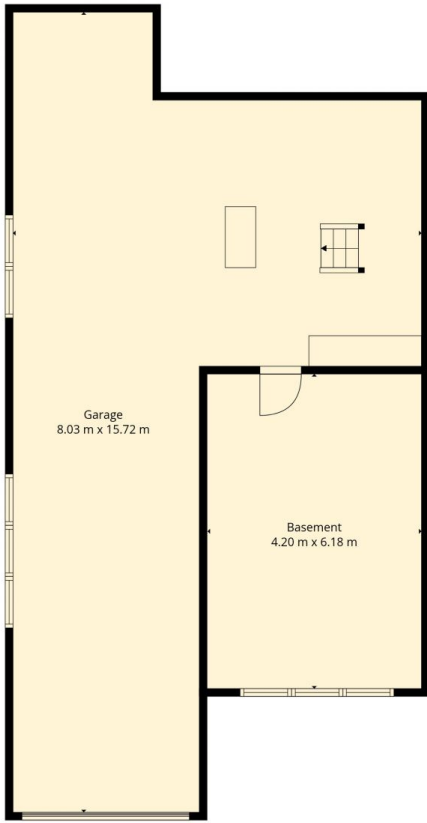
[For full version visit the website](https://dev.stonerealestate.co.nz)

**Type** : House  
**Price** : \$790,000  
**Land Size** : 1022 sqm  
**View** : <https://dev.stonerealestate.co.nz/sale/nz/-te-awamutu/residential/house/8656155>



**Braden Chick**  
07 871 5044

<https://dev.stonerealestate.co.nz>



Basement 1



1st Floor

**TOTAL: 160 m<sup>2</sup>**  
 Basement 1: 0 m<sup>2</sup>, 1st floor: 160 m<sup>2</sup>  
 EXCLUDED AREAS: BASEMENT: 26 m<sup>2</sup>, GARAGE: 79 m<sup>2</sup>, WALLS: 17 m<sup>2</sup>

Measurements Are Deemed Highly Reliable, But Not Guaranteed Accurate.