



1/403 Mahoe Street Te Awamutu NZ

3 1 2

If you're seeking convenience and low-maintenance living right in the heart of town, this solid brick townhouse is an excellent choice. Perfectly suited for downsizers and retirees, this home offers comfort, space, and ease.

The open-plan kitchen and dining area is generously sized and filled with natural light, creating a warm and inviting atmosphere. The modern kitchen flows effortlessly through to the dining and lounge areas, making it ideal for both everyday living and entertaining.

There are three well-proportioned bedrooms, each featuring built-in wardrobes, ensuring plenty of storage throughout. The contemporary main bathroom is thoughtfully designed with dual access from both the

Type : Townhouse

Price : \$750,000

View : <https://dev.stonerealestate.co.nz/sale/nz/-/te-awamutu/residential/townhouse/8674643>



Samantha Clarke

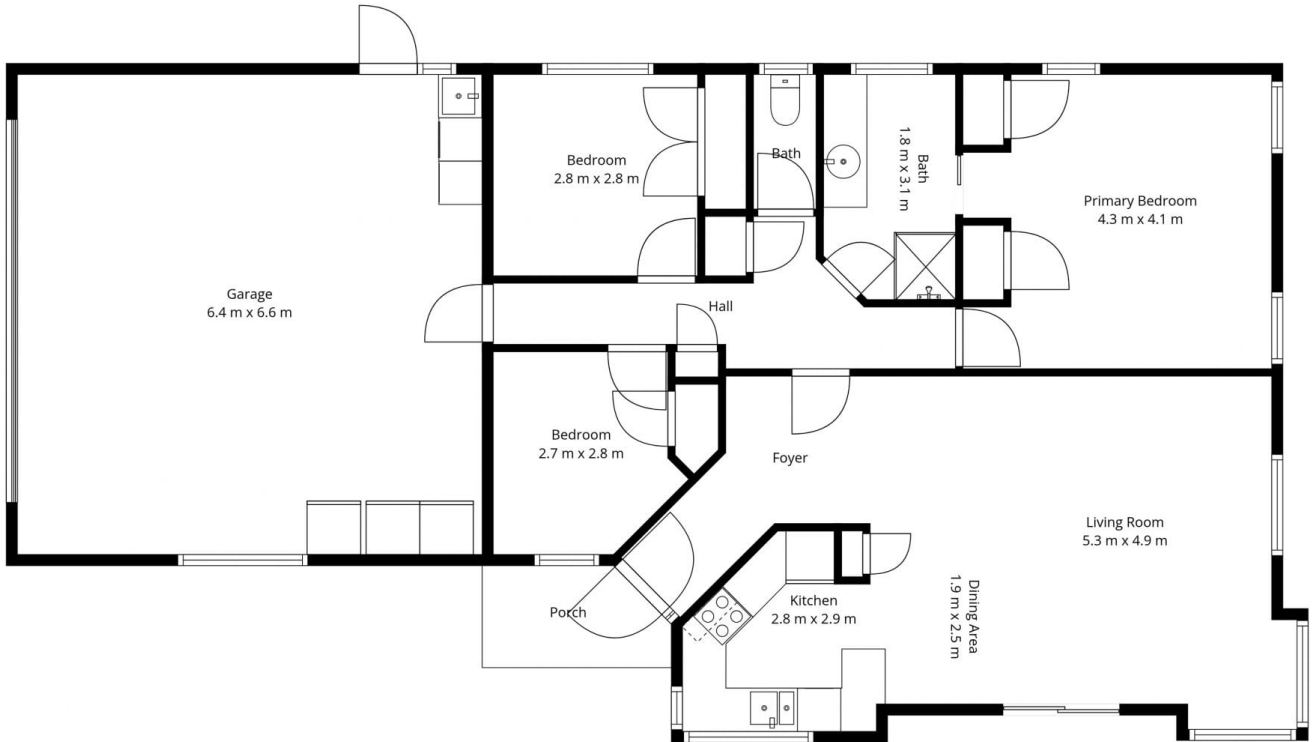
07 871 5044

[For full version visit the website](https://dev.stonerealestate.co.nz)

<https://dev.stonerealestate.co.nz>

1/403 Mahoe Street

Total Floor Area: 140 sq.m APPROX.



*in*House

This floor plan has been created by inHouse and are intended solely for marketing purposes. The plans are not scale drawings, however, we've made every effort to ensure the accuracy of the information, but we cannot be held liable for any potential inaccuracies. We kindly request that you refrain from reproducing or distributing the floor plans without obtaining consent from inHouse.

1/403 Mahoe Street

Total Floor Area: 140 sq.m APPROX.



*in*House

This floor plan has been created by inHouse and are intended solely for marketing purposes. The plans are not scale drawings, however, we've made every effort to ensure the accuracy of the information, but we cannot be held liable for any potential inaccuracies. We kindly request that you refrain from reproducing or distributing the floor plans without obtaining consent from inHouse.