



### 262 Douglas Avenue Te Awamutu NZ

3 2 2

Positioned on sought-after Douglas Avenue, this solid brick home offers space and comfort. Set on an elevated site, the home enjoys beautiful views out to Mount Kakepuku, perfectly captured from the private outdoor entertaining area, an ideal setting for relaxing or hosting guests.

Inside, you'll find three generously sized bedrooms, each with its own ranch slider opening out to the balcony, creating seamless indoor-outdoor flow. The master suite is well-appointed with a walk-in wardrobe and ensuite, along with its own covered outdoor space, the perfect spot to enjoy your morning coffee.

The heart of the home features an open-plan kitchen and dining area with high raked ceilings, enhancing the sense

[For full version visit the website](#)

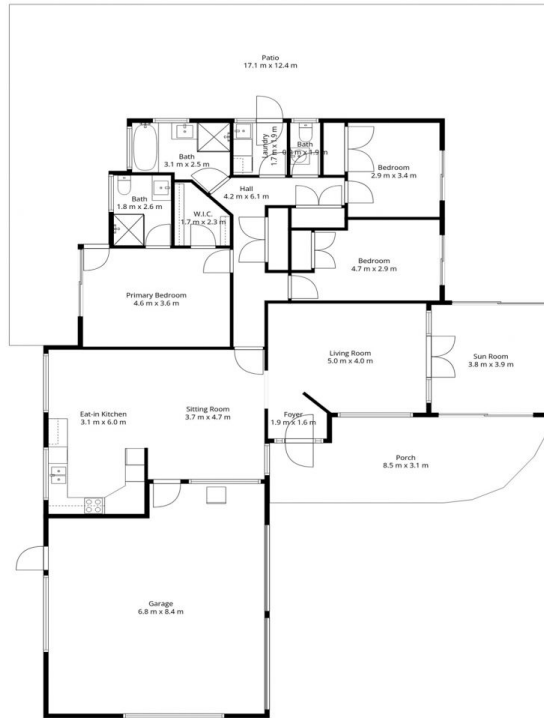
**Type** : House  
**Price** : \$875,000  
**Land Size** : 515 sqm  
**View** : <https://dev.stonerealestate.co.nz/sale/nz/-/te-awamutu/residential/house/8675200>



**Samantha Clarke**  
07 871 5044

# 262 Douglas Avenue

Total Floor Area: 210 sq.m APPROX.



*in*House

This floor plan has been created by inHouse and are intended solely for marketing purposes. The plans are not scale drawings, however, we've made every effort to ensure the accuracy of the information, but we cannot be held liable for any potential inaccuracies. We kindly request that you refrain from reproducing or distributing the floor plans without obtaining consent from inHouse.

# 262 Douglas Avenue

Total Floor Area: 210 sq.m APPROX.



*in*House

This floor plan has been created by inHouse and are intended solely for marketing purposes. The plans are not scale drawings, however, we've made every effort to ensure the accuracy of the information, but we cannot be held liable for any potential inaccuracies. We kindly request that you refrain from reproducing or distributing the floor plans without obtaining consent from inHouse.