



6/269 Churchill Street Te Awamutu NZ

2 1 1

Enjoy easy living in a welcoming community of like-minded residents, perfectly positioned close to town with effortless access by foot or mobility scooter.

This well-presented home offers a light-filled open-plan living area complemented by a modern kitchen, all finished in neutral tones to suit any style. Two generous double bedrooms provide comfortable accommodation, while the bathroom features a practical wet-floor shower and toilet for ease of use.

The internal access single garage adds everyday convenience, and the Archgola creates a sheltered outdoor space - ideal for enjoying your morning coffee year-round.

**Type** : Unit  
**Price** : \$575,000  
**Building Size** : 90 sqm  
**View** : <https://dev.stonerealestate.co.nz/sale/nz/-/te-awamutu/residential/unit/8696773>



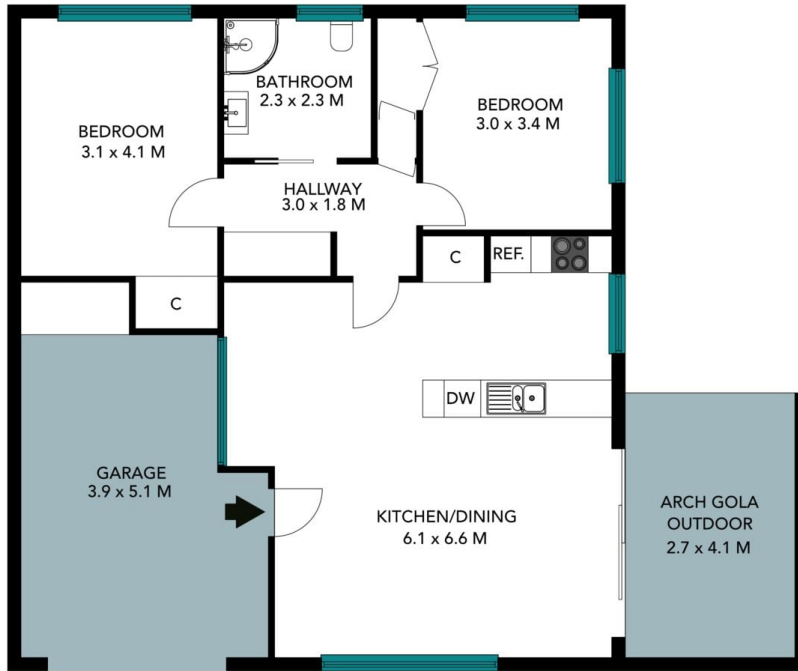
**Fiona Collins**  
07 871 5044

**Ian Jones**  
07 871 5044

[For full version visit the website](https://dev.stonerealestate.co.nz)

<https://dev.stonerealestate.co.nz>

6/269 Churchill Street  
Te Awamutu



The floor plan is not to scale; measurements are indicative and in metres. Exterior elements are not in position. Plans should not be relied on. Interested parties should make and rely on their own enquiries. All other information provided has been collected from reliable sources but cannot be guaranteed for accuracy.

6/269 Churchill Street  
Te Awamutu



The floor plan is not to scale; measurements are indicative and in metres. All features included in this 3D plan are for inspiration purposes only. This is not an exact replica of the property or the position of exterior elements. Plans should not be relied on. Interested parties should make and rely on their own enquiries.